

News from Cheltenham Animal Shelter



100 years of caring for pets in need

Inside:

- A century of compassion
- Animal updates
- CASVet Care Club
- What's on – celebrate with us!
- From hay to herbs: feeding rabbits well
- Child & dog safety
- How your support helped in 2025

Welcome to our spring newsletter



I am delighted to welcome you to the spring 2026 edition of our newsletter.

2026 marks an extraordinary milestone as we celebrate our centenary year – 100 years of helping animals in need. To honour this achievement, we have an exciting calendar of events planned throughout the year. Highlights include a lively Ceilidh at the Bishop's Cleeve Tithe Barn, a glamorous black tie ball at Pittville Pump Room and an exhilarating Fire and Ice Walk. Also, our patron Pam Ayres, is putting on a very special event at The Roses Theatre in Tewkesbury, with proceeds coming to the Shelter.

You can find more details of our events enclosed and at www.gawa.org.uk/events-calendar.

In this newsletter, we reflect on our 100 year history, and there are updates on the cats, dogs, and small animals currently in our care. You'll also find features on how to care for your pets, and advice on important issues such as dog bite prevention and rabbit welfare.

2025 was a significant year for Cheltenham Animal Shelter, with some major improvements to our animal facilities, including new dog kennel roofs and kennel hatches. Each upgrade has enhanced the welfare and comfort of the animals we care for.

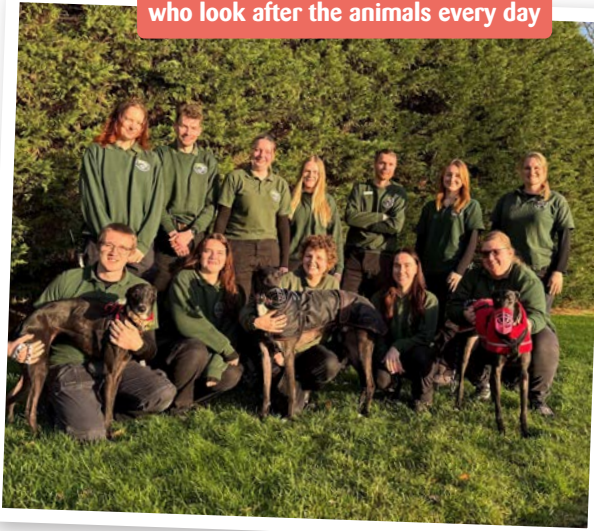
Thanks to your continued generosity and support, we were able to care for hundreds of animals and strengthen the services we offer.

I wish everyone a good 2026 and would like to thank you for being part of our journey – past, present, and future. We simply couldn't do this without you.

Best wishes from myself and the team here at the Shelter.

Peter Newcombe
General Manager

Just some of our animal care team, who look after the animals every day



A century of compassion



To mark 100 years of helping animals, we are exploring our history and uncovering the stories that have shaped our charity.

In the late 19th century, a group of local people came together to help lost and sick animals. Over time, it became clear that to truly care for animals, a dedicated Shelter would be required. The turning point came in 1926 with the purchase of Roselands, a house in Leckhampton. Set within 1.5 acres of land, the animals could recover in a secure environment.

At this time, regular reporting on the animals started, and income and expenditure were recorded. It is because of these foundations that the charity began to become more effective, and why we are marking one hundred years in 2026.

In May 1939, we moved to Gardners Lane, which remains our home today. Later that year, the Second World War began, and in the years that followed, the Shelter responded with initiatives to support local people and their pets.

Over the decades, the Shelter has changed with new facilities made possible by the generosity of donations from the public, and gifts left in Wills.

In 2004, CASVet opened, extending our support beyond rescue animals, to help local pet owners, and over the years, we have welcomed pets into our boarding facilities and grooming parlour.

Alongside this care, our education programmes have played a vital role in shaping a better future for animals – ensuring that compassion continues for generations to come.

Find out more about our history and share your memories at www.gawa.org.uk/100-years



Mrs Gwendoline Gordon of Pittville, a founding member of the Animals' Welfare Association



Throughout the 1970s and 80s, new animal facilities were added



Cats corner

Chester

Sixteen-year-old Chester came to us following a decline in his owner's health.



Panda has suspected flea allergic dermatitis, which is being managed with medication. She would need to be the only cat in the home and would thrive in a calm, low-stress environment with outdoor access, where she can relax and roam to her heart's content.

Puffin

Puffin is a sweet ten-year-old semi long-haired lady, who was brought to us as a stray.



She is incredibly friendly and adores a cuddle, often climbing onto your shoulder for fuss and a gentle neck nuzzle!

Although Puffin has only a few teeth remaining and some muscle wastage in her hips (which we are managing with pain relief), she still delights in her food and remains a bright and cheerful little soul.

Puffin would do best in a calm home with teenage children for company, and safe access to the outdoors to explore and enjoy her surroundings.

Panda

Panda is a five-year-old black and white long-haired girl, who is searching for a calm home.



She was brought to us as a stray, but despite her uncertain past, she is incredibly friendly and adores an occasional treat!

CASVet Care Club



CASVet is your local, affordable vet practice based at Cheltenham Animal Shelter in Gardners Lane. We provide expert pet care, offering a wide range of services for all pets.

Our new CASVet Care Club has been designed to provide preventative healthcare for your pets. The cost is competitive and can be purchased as one annual payment with a 5% discount, or the cost can be spread across 12 monthly payments.

What's included?

Dog & Cat Plan

- Vet health check twice a year with routine vaccinations included
- Prescription multi-parasite treatment all year round
- £20 off neutering
- £30 off dental scale and polish
- 50% off kennel cough vaccinations
- 50% off a vet nurse nail clip and anal gland expression
- 50% off microchipping

Puppy & Kitten Plan

- Puppy or kitten welcome pack
- Free vet check at 6 and 9 months
- Free vet nurse puppy check at 4 and 5 months
- Monthly prescription parasite treatment
- £20 off neutering
- 50% off kennel cough vaccinations
- 50% off a vet nurse nail clip and anal gland expression
- 50% off microchipping

Pricing

- Cats and kittens: £15.50 per month
- Dogs less than 20kg: £17 per month
- Dogs 20kg to 40kg: £19 per month
- Dogs over 40kg: £25 per month

Terms and conditions apply. Home delivery for certain medications at £12 per year.

Contact us

Send a message on WhatsApp
07446 930 244.

Send an email to casvet@gawa.org.uk



These cats may have been adopted by the time you receive your newsletter, but there are plenty more who need homes. Please visit www.gawa.org.uk/adopt-a-pet to find out more.

CASVet is a social enterprise offering expert veterinary treatment, with a share of the profits going to Cheltenham Animal Shelter. Visit www.gawa.org.uk/casvet

What's on: upcoming events

We have a packed calendar of events coming up for 2026, offering plenty of opportunities to get involved, have fun, and support animals in need during our special centenary year.

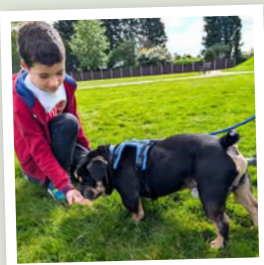
Tewkesbury Big Weekend fun dog show – Saturday 16th May, The Vineyards

We're delighted to return to Tewkesbury Big Weekend with our ever-popular fun dog show. Bring your four-legged friends along to enjoy a friendly competition, alongside local stallholders selling unique handmade gifts and a range of dog-friendly activities to keep tails wagging all day.



Animal Experience Days

Running during school holidays, these sessions give children aged 5–16 years hands-on experience with our rescue animals in a fun, educational environment.



100 Years Ceilidh celebration – Friday 5th June, Tithe Barn, Bishops Cleeve

Celebrate 100 years of Cheltenham Animal Shelter with a joyful evening of music and dancing at a traditional Gaelic ceilidh. Set in the beautiful Tithe Barn, this high-energy night promises laughter, live music from Ceilidh Tree, and easy-to-follow dances suitable for all abilities. Tickets include a cold buffet, with a bar available. Book tickets here. →

tickets on sale



Cheltenham Food & Drink Festival – 19th–21st June, Montpellier Gardens

Join us at this dog-friendly festival celebrating the best food and drink in the region. We'll be there across the three days with treats, toys, dog activities and information about pets looking for new homes. Don't miss our fun dog show!



Summer Open Day & Fun Dog Show – Saturday 4th July, Cheltenham Animal Shelter

Visit us on-site in Gardners Lane for a fantastic family day out. Enjoy “have a go” dog games, our fun dog show, children's activities, local traders and the chance to learn more about the work we do. A perfect summer outing for animal lovers of all ages.



Centenary Black Tie Ball – Friday 11th September, Pittville Pump Room

Celebrate in style at our elegant charity ball. Guests will enjoy a welcome drink, a three-course meal and live entertainment from popular Gloucestershire band Tux Fizz, all in the stunning surroundings of Pittville Pump Room.

Malvern Autumn Show – 25th–27th September, Three Counties Showground

We're returning for another year to host the Rabbit Zone, promoting responsible rabbit ownership. Meet our rescue rabbits, receive expert advice and take part in hands-on activities, including making enrichment toys.



Pam Ayres: Doggedly Onward – Thursday 1st October, The Roses Theatre

Our Patron, Pam Ayres, brings her solo show to The Roses Theatre, sharing poems from her celebrated 50-year career. Proceeds will support Cheltenham Animal Shelter as part of our 100-year celebrations.



Festive Fayre – Thursday 26th November, Cheltenham Animal Shelter

Get into the festive spirit with free entry to our Festive Fayre. Enjoy Santa's Grotto, Santa Paws for dogs, a Christmas market, food and drink, live entertainment and late-night shopping in our charity shop.

From hay to herbs: feeding rabbits well

All rabbit owners want the best for their furry companions. One of the simplest ways to do this is by ensuring their diet is appropriate and nutritious.

Hay and grass

Hay is dried grass, and there are lots of varieties available. All have a different taste and texture that your bun may enjoy. Generally, a rabbit should be eating their body size in hay each day, but they should have an unlimited supply.

Rabbits enjoy eating fresh grass when it is available, however, lawn mower grass clippings should never be fed, as they ferment quickly and can be deadly.

A great way of adding variety is by including dried forage, which consists of dried herbs, flowers and plants that buns would eat in the wild.

Herbs and veggies

Some rabbits tolerate fresh salad leaves and vegetables better than others. It's best to introduce new foods in small amounts to avoid upset tummies, and herbs like parsley and mint are a great place to start.

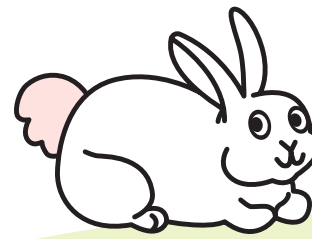
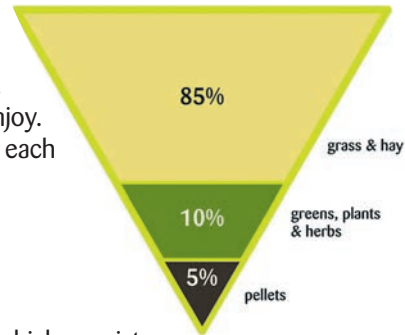
Pellets vs muesli

Rabbits can have one egg cup full of quality rabbit pellets per day, but muesli diets should be avoided, as they can lead to obesity and selective feeding.

More than just food

For rabbits, eating is a way to explore their world, so hiding forage in hay encourages natural behaviours. Continual access to the right food helps their hindgut digestion, thereby reducing the risk of life-threatening gut stasis and it's also necessary to wear down their teeth.

Fresh water should always be available, and sugary treats like fruit or carrots should only be an occasional extra. The foundation of every healthy rabbit diet is simple – get the balance right, and you'll be supporting not just a healthy rabbit, but a happy one too.



Small furries

Peter



Five-year-old Peter came into the Shelter when his previous owner was no longer able to care for him. He is a sweet and inquisitive boy and he's always quick to investigate anything new in his enclosure.

Peter could live indoors or outdoors in a secure, predator-proof setup, alongside another rabbit friend, with a minimum space of 60 square feet as per our standard recommendation. Peter will make a wonderful companion and is ready to meet his forever family.

Seymour



White and brown spotted, Seymour, was handed in after a kind member of the public found him straying. Due to the quick thinking of this person, Seymour is now safe with us and learning to trust people again. He is growing in confidence each day and loves nothing more than sitting up high watching the goings on around him.

Seymour is ready for the next chapter in his life, and he could live indoors or outdoors with a neutered companion. He is a wonderful example of how a small act of kindness can save a life.

Patty and Selma



Rabbits come into our care from many different situations, and sisters Patty and Selma arrived with us after being transferred from another animal welfare charity. From the moment they arrived, it was clear just how closely bonded they were.

We are committed to keeping pairs of rabbits like Patty and Selma together whilst looking for their perfect home.

These rabbits may have been adopted by the time you receive your newsletter, but there are plenty more who need homes. Please visit www.gawa.org.uk/adopt-a-pet to find out more.

Dog tails

Dexter

Four-year-old Dexter is a handsome boy, with a happy, lively personality and a heart full of warmth.

He adores attention and belly rubs and will proudly offer his paw when a tasty treat is on hand! Bright and inquisitive, Dexter enjoys toys and puzzle games that keep his mind active. He would suit a calm, confident owner who can match his pace on walks, and offer a secure garden for him to explore at his leisure.



Kola

Kola is a sweet, one-year-old boy with a big heart and lots of love to share.

He came to us after a change in his owner's circumstances and is now looking for a new home.

Charming and friendly, Kola enjoys cuddles once he feels comfortable and loves playing games and taking part in enrichment activities with his human friends.

He would flourish in a calm home with teenage children who can provide gentle reassurance, companionship, and help with his training.



Ollie

Ollie is a gorgeous five-year-old Beagle, with a sweet and fun-loving nature.

He adores cuddles and fuss, has a real enthusiasm for food and treats, and enjoys playing with his beloved toys and heading out for little adventures in the car!

Ollie would be happiest in a calm, peaceful home. He's best suited to a pet-free household, and although a little wary of men at first glance, with patience and kindness he soon relaxes and moves in for a cuddle.

These dogs may have been adopted by the time you receive your newsletter, but there are plenty more who need homes. Please visit www.gawa.org.uk/adopt-a-pet to find out more.

Child and dog safety; how we are taking action

In the UK there are over 10 million pet dogs, however, dog ownership comes with important responsibilities.

Current pet bite statistics highlight the need for owners to prioritise child safety around dogs, with a striking **90% of reported dog bites to children occurring in the home and involving a dog they know***.

Children are among the most at-risk groups for dog bite injuries, often because of their size, excitable behaviours, and difficulty in analysing canine body language, which leads to the question, what can we do to help?

At CAS, we believe teaching children of all ages the skills they need to better understand dogs is vital. By visiting schools and children's groups, our education team can provide informative and engaging talks to large audiences of children, teaching how to recognise dog body language, understand dogs' comfort zones, and how best to interact and, importantly, stay safe.



Take dog communication for example – did you know that a dog scratching, licking its lips and even yawning can all be signals that they are feeling unsure or stressed?

Our talks can be followed up with our online resources, taking the learning and fun beyond our visit, with quizzes and step-by-step guides to making pet enrichment and much more!

By working together with families, schools, and caregivers, we hope to help reduce dog bite incidents and foster safer, happier relationships between children and dogs – benefiting both our community and animal welfare alike.

If your school or setting would like to book a dog safety talk, a bespoke pet care session, or to access our free educational activities and resources, visit www.gawa.org.uk/educational-talks



*The Dogs Trust National Survey

We all love a happy ending!

Seven-year-old **Dot** spent four weeks at the Shelter before finding another chance at happiness with Lynda and Jim.

"Dotty is very vocal and loves lots of attention – she chatters all the time to let us know where she is. She flies around the house like lightening and likes to sit on the windowsills, watching the birds and squirrels. At night she jumps on the bed, lays on our pillows in turn, and chatters to wake us up and stroke her – she is very amusing and demanding. She has settled in very well and we love her to bits!"



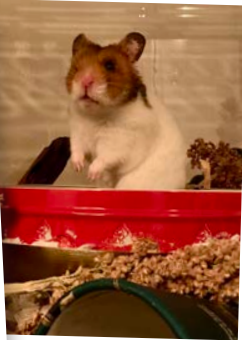
One eyed hamster, **Clark**, spent just 13 days with us before finding his forever home.

"Odin (previously called Clark) has settled in beautifully and is a happy and confident lad! When he arrived home he wasn't able to be handled, but after some time (and treats) he's learned that human hands mean he gets to come out and play! He's obsessed with his wheel and is very happy running marathons every night!"



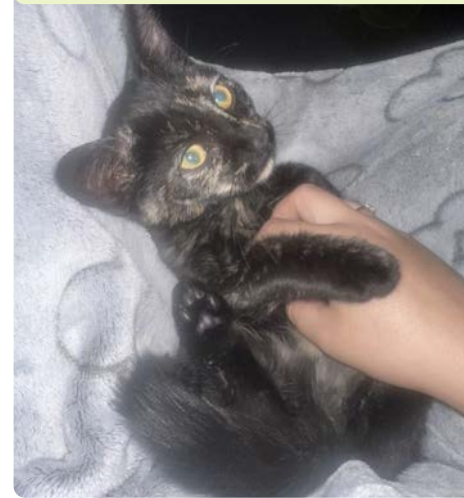
9-year-old **Buffy** came to the Shelter as a stray and spent four months in our care before finding her perfect match.

"Buffy loves to stretch out on the sofa and enjoys plenty of fuss. The garden is wonderful for zoomies, especially before our daily walks across the fields, and sometimes we go for rides in the car where Buffy sits up to watch the world go by. She has settled in really well and it seems like she has been our dog for years."



Elora the kitten was only three months old when she left us to join her new family.

"We took Elora home and she's been nothing but the most loving, playful and mischievous cat ever. She came home to our two boys, Oreo and Tigs, and straight away she was confident and they have all been best friends ever since."



Four-year-old **Bramble** (now called Oatie) came to the Shelter from another charity who rescues rabbits from bad situations. Happily, he has found a wonderful home with another ex-shelter bun called Cookie.

"Oatie is an inquisitive little soul and loves hopping in and out of boxes, jumping around and searching for hidden treats. He has become more confident in having human fuss and loves head strokes, often eyes closed and purring."



Two-year-old **Pluto** (now called Kato) came to the Shelter because his owner couldn't give him the time he needed. He is now getting all the attention he could ask for from Martin and Julie.

"He's a lovely dog – playful and affectionate. He likes to chill out on a blanket box under the window and look outside. We meet lots of local dogs when we walk round the lanes and, although he was nervous at first, he now recognises them and is happy to greet them and even has his favourites. We're really happy having Kato in our lives."

Take on a challenge event

Do you want to help animals in need and support your local shelter? Join #TeamCAS and take on a challenge in 2026.

There are runs and adrenaline boosts to suit all tastes, but if you don't find what you want, create your own challenge – we'd love to hear from you.

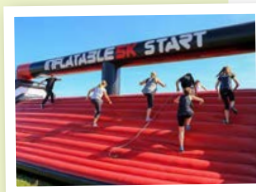
Cheltenham Running Festival – 14th June

Choose to run the 5k, 10k or half marathon around the famous Cheltenham Racecourse. Sign up now to get 50% off the entry fee, and start training. There is also a Junior Race available for children – making this a great challenge for the entire family.



Inflatable 5k Cheltenham – 10th October

This is a really fun event to take part in on your own or as part of a team and the atmosphere will be electric with pumping music and lots of laughs. Choose either a 2.5k (1 lap) or 5k (2 laps) race – there is something for all abilities!



Run Cheltenham – 20th September

This is a chip-timed 10k or half marathon around Cheltenham. The atmosphere is amazing and if you register now you get 50% off the entry fee.



Skydive!

Join #TeamCAS and take to the skies for a breathtaking and exhilarating experience of a lifetime. Available to book at airfields across the UK with various days and times to choose from, all year round.

NEW for our 100 Years Celebration Fire & Ice Challenge – 14th October

This is definitely a case of mind over matter as you walk barefoot on hot coals and broken glass. Training is given on the night, and afterwards you will feel empowered and proud of your personal achievement. Invite your friends and family to support you on the night. www.gawa.org.uk/event/fire-and-ice

NEW



Visit www.gawa.org.uk/challenge-events to find out more. If you don't see anything you would like to do, click 'Search more events' to find a wide range of events you can enter to support Cheltenham Animal Shelter

Your Support in 2025

With the start of the new year behind us, this is the perfect time to reflect on the difference your support made to our work in 2025.

Animal welfare

In 2025 we cared for around 500 animals at the Shelter with each staying for an average of 51 days, although we also rehomed 20 pets who had been in our care for six months or longer.

Many pets required medical treatment, and as a result, we spent nearly £80,000 on veterinary fees.

Education and animal assisted services

We visited 18 local schools, reaching over 500 children with guidance on responsible pet care. We also attended numerous community events, giving pet owners the opportunity to speak with our team and receive practical advice.

Our animal-assisted services continued to support both older and younger people, while our ever-popular Animal Days courses welcomed more than 430 children, helping them learn how to look after pets.

Our community

We continued to help people facing difficult circumstances by providing assistance with neutering and veterinary costs, operating our pet food bank, and working alongside other local charities to help families.

The Shelter

Although our facilities are ageing, this year we completed important upgrades, including new roofs on our kennel blocks and safer hatch systems, helping to protect the dogs, staff and volunteers who support them every day.

This work would not have been possible without your support – thank you.

500

Animals helped at the Shelter

Average pet stay in days

51

Over £80,000

spent on vet fees

Supported hundreds of people and their pets in the community

Inspiring over 900 children to care for animals responsibly

Write your Will for Free

Request our free Will Guide and find out how leaving a gift in your Will helps vulnerable animals. You can also use our Will writing service to write your Will for free.

It's easy to request information and find out more at www.gawa.org.uk/leave-a-legacy, or contact the fundraising department at Cheltenham Animal Shelter by emailing fundraising@gawa.org.uk



**Free Will
writing service
available**

Gifts in Wills fund nearly one third of our work and we simply couldn't help animals in need without these special gifts. Thank you for finding out more.



Cheltenham Animal Shelter, Gardners Lane, GL51 9JW
Call us: 01242 523521
Visit us: www.gawa.org.uk
Charity registration number: 1081019



Registered with
**FUNDRAISING
REGULATOR**